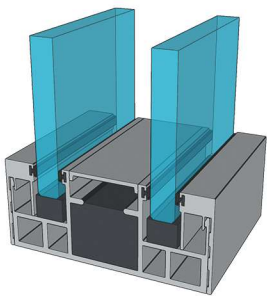
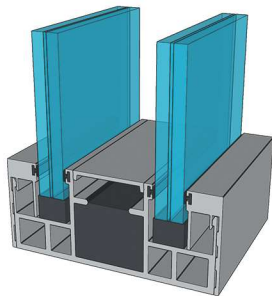


# A2200 Double Glaze

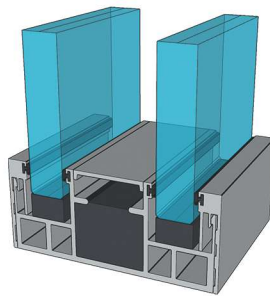
patent pending



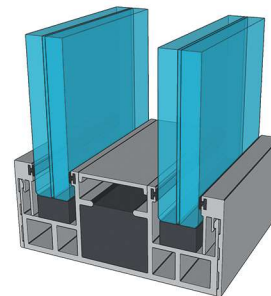
1/2" Tempered Glass  
STC 34, OITC 34  
GS005



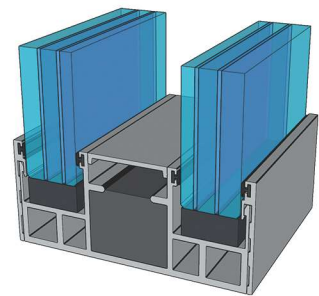
9/16" Laminated Glass  
STC 48, OITC38  
GS005



3/4" Tempered Glass  
STC 37, OITC 38  
GS003



13/16" Laminated Glass  
STC 50, OITC 42  
GS003



1-1/16" Laminated Glass  
STC TBD, OITC TBD  
GS001

## Product Data

Material - 6063-T5 Aluminum

Maximum Glass Height - 12ft. (144in.)

Maximum Glass Width - 6ft. (72in.)

Stock length - 13ft. (156in.)

STC - Rating depends on the glass

OITC - Rating depends on the glass

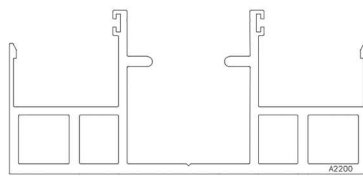
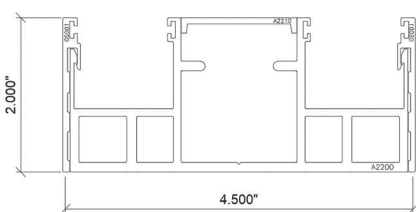
Glass options 7/16" - 1-1/16"

Tempered, Monolithic, Insulated,

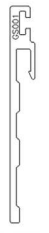
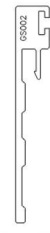



Laminated, and Smart or Privacy Glass

Introducing the A2200 Double Glaze System – an elegantly designed glass partitioning solution for architects. Our modular design allows for over 100 different glass configurations, creating endless possibilities to create a truly one-of-a-kind interior environment. This all glass partitioning system will give your clients the modern visual appeal they crave. The A2200 Double Glaze provides excellent soundproofing, insulation and protection to ensure a safe and comfortable experience for your clientele.

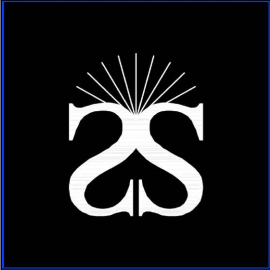
Invest in the best, invest in A2200 Double Glaze today!



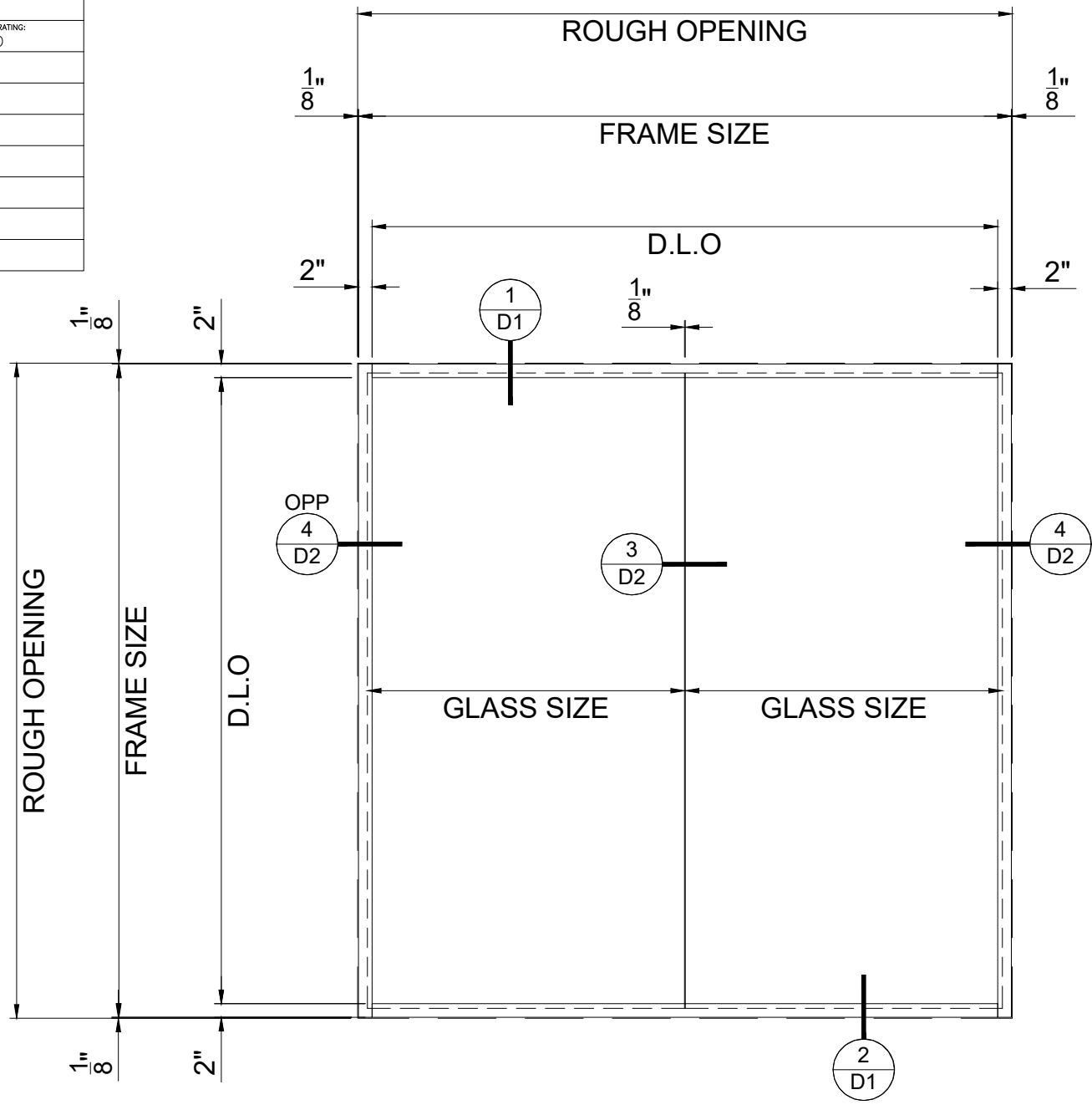
A1200 Base Track

				
Part.No. GS001	Part.No. GS002	Part.No. GS003	Part.No. GS004	Part.No. GS005

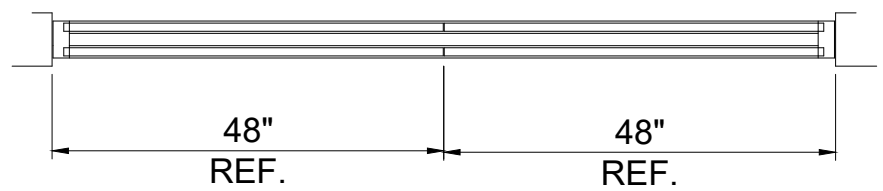
Glass Stop Options



SYSTEM: A2200 DOUBLE GLAZE	
GLASS TYPE SHOWN: 1 1/16" DOUBLE LAMINATED	
GLASS STOP SHOWN: GS001	
SEAL: RUBBER BULB SEAL	
SCALE: 1:1	
STC RATING: TBD	OITC RATING: TBD
DATE: 02.22.2023	
PATENT PENDING: #561521911	
PAGE: E1	
NOTES:	



1 ELEVATION  
 QUANTITY: .  
 ARCH REF: -



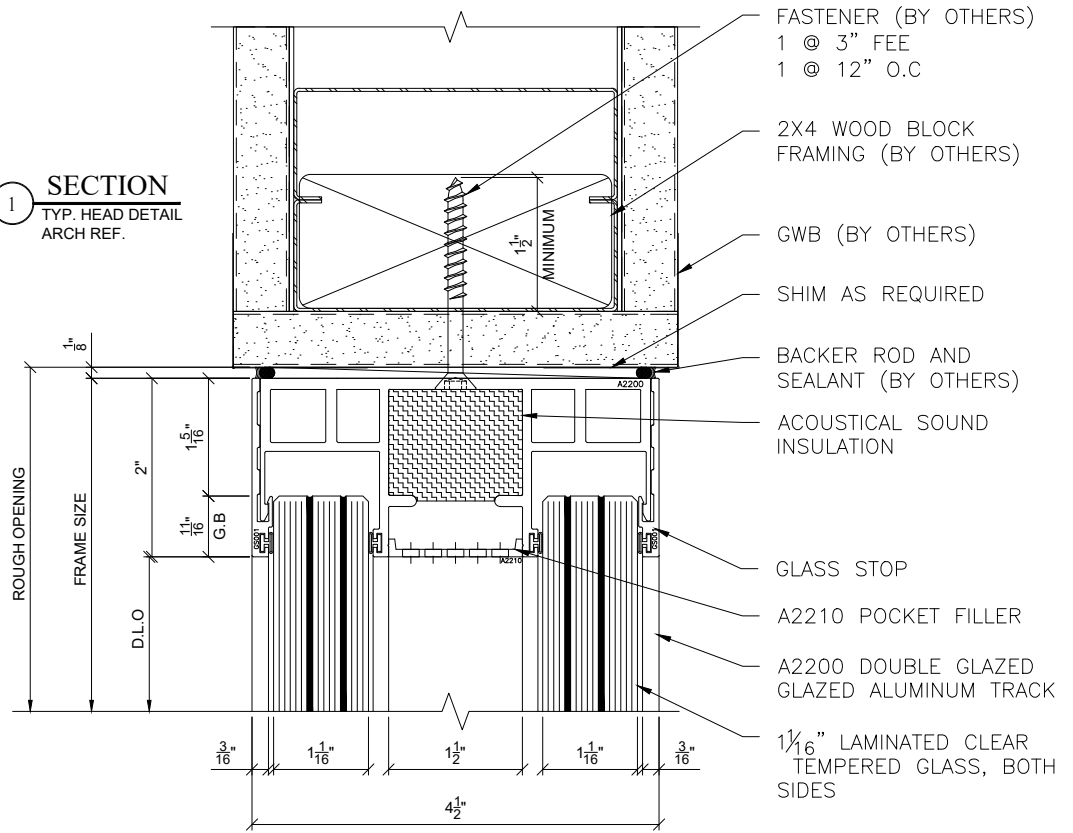


SYSTEM: A2200 DOUBLE GLAZE	
GLASS TYPE SHOWN: 1 1/16" DOUBLE LAMINATED	
GLASS STOP SHOWN: GS001	
SEAL: RUBBER BULB SEAL	
SCALE: 1:1	
STC RATING: TBD	QIRC RATING: TBD
DATE: 02.22.2023	
PATENT PENDING: #561521911	
PAGE: D1	
NOTES:	

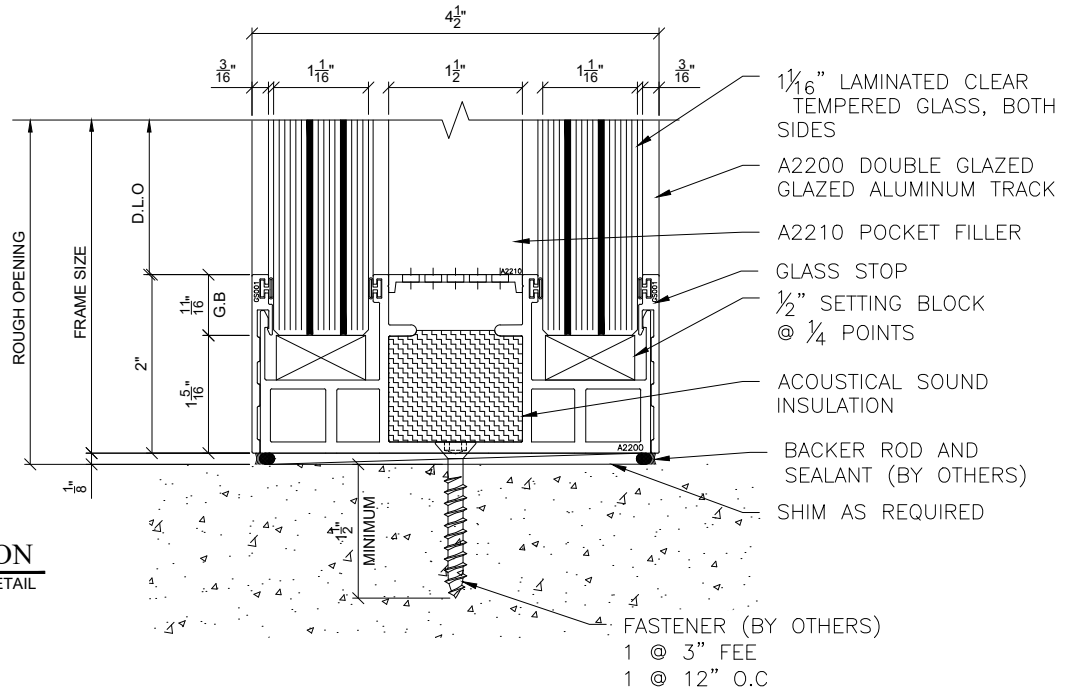
GLASS OPTIONS:	GLASS STOP
1 1/16" LAMINATED	GS001
1" INSULATED	GS001
7/8" INSULATED	GS002
7/8" MONOLITHIC	GS002
13/16" LAMINATED	GS003
3/4" LAMINATED	GS003
3/4" INSULATED	GS003
1 1/16" LAMINATED	GS004
1 1/16" MONOLITHIC	GS004
5/8" LAMINATED	GS004
5/8" MONOLITHIC	GS004
9/16" LAMINATED	GS005
1/2" MONOLITHIC	GS005
7/16" MONOLITHIC	GS005

NOTES:  
THIS GLAZED SYSTEMS CAN USE DIFFERENT GLASS CONFIGURATIONS DEPENDING ON THE THICKNESS OF GLASS AND THE GLASS STOP NEEDED.

**1 SECTION**  
TYP. HEAD DETAIL  
ARCH REF.



**2 SECTION**  
TYP. SILL DETAIL  
ARCH REF.





SYSTEM:	A2200 DOUBLE GLAZE
GLASS TYPE SHOWN:	1 1/16" DOUBLE LAMINATED
GLASS STOP SHOWN:	GS001
SEAL:	RUBBER BULB SEAL
SCALE:	1:1
STC RATING:	TBD
OTC RATING:	TBD
DATE:	02.22.2023
PATENT PENDING:	#561521911
PAGE:	D2
NOTES:	

GLASS OPTIONS:	GLASS STOP
1 1/16" LAMINATED	GS001
1" INSULATED	GS001
7/8" INSULATED	GS002
7/8" MONOLITHIC	GS002
1 3/16" LAMINATED	GS003
3/4" LAMINATED	GS003
3/4" INSULATED	GS003
1 1/16" LAMINATED	GS004
1 1/16" MONOLITHIC	GS004
5/8" LAMINATED	GS004
5/8" MONOLITHIC	GS004
9/16" LAMINATED	GS005
1/2" MONOLITHIC	GS005
7/16" MONOLITHIC	GS005

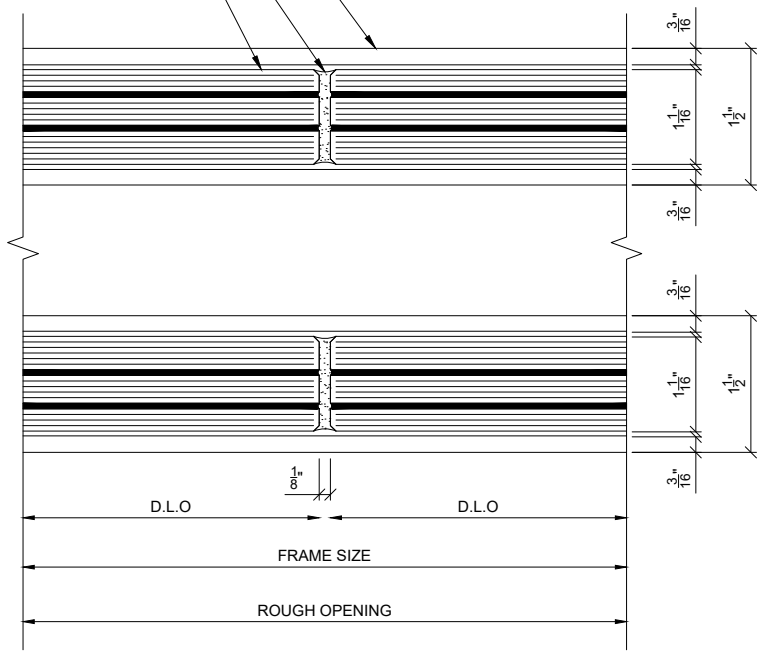
NOTES:  
THIS GLAZED SYSTEMS CAN USE DIFFERENT GLASS CONFIGURATIONS DEPENDING ON THE THICKNESS OF GLASS AND THE GLASS STOP NEEDED.

SOLITE A1200 SINGLE GLAZED ALUMINUM TRACK

SEALANT

1 1/16" CLEAR LAMINATED TEMPERED GLASS

**SECTION 3**  
TYP. VERTICAL DETAIL  
ARCH REF.



ACOUSTICAL SOUND INSULATION  
A2200 DOUBLE GLAZED GLAZED ALUMINUM TRACK  
1 1/16" LAMINATED CLEAR TEMPERED GLASS, BOTH SIDES  
GLASS STOP  
SEALANT (BY OTHERS)  
SHIM AS REQUIRED  
GWB (BY OTHERS)  
2X4 WOOD BLOCK FRAMING (BY OTHERS)

**SECTION 4**  
TYP. JAMB DETAIL  
ARCH REF.

